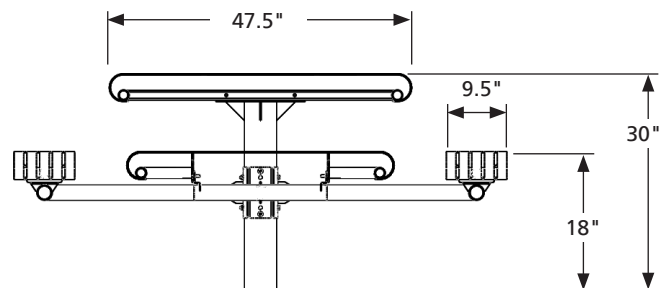
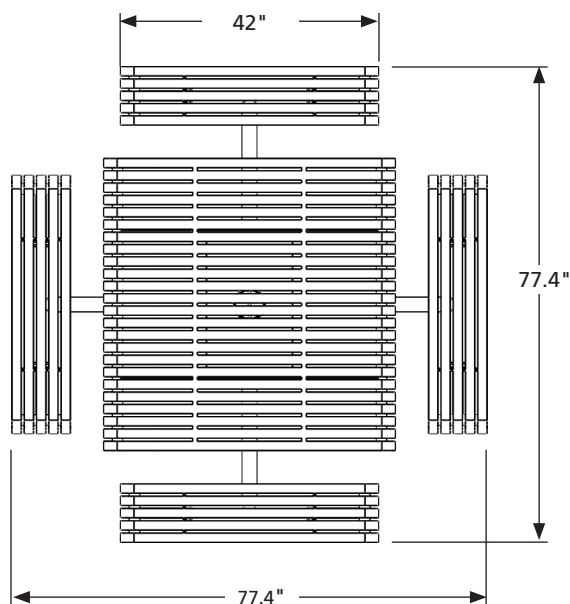




PICNIC TABLES

Model:	PT001L-G
Desc.:	Square Pedestal Picnic Table with Laser Cut Seats and Table Top
Capacity:	8-Person
Frame:	5" (127 mm) 11ga (3.18 mm) and 2.375" (60.33 mm) Round Tubing, Polyester Powder Coat Finish
Seats & Top:	7ga (4.76mm) Laser Cut Steel Sheet
Type:	Inground
Options:	PT001L-G-CB with Chess/Checker Board; PT001L-G-A Accessible
Finish:	Polyester powder coating applied electrostatically over sand blasted and zinc primer coating substrate.
Maintenance:	Periodically wipe down to keep clean.



Dimensions:	IMPERIAL	METRIC
Length:	77.4"	(1966 mm)
Width:	77.4"	(1966 mm)
Height:	30"	(762 mm)
Seat Height:	18"	(457 mm)
Seat Width:	9.5"	(241 mm)
Table Width:	47.5"	(1207 mm)